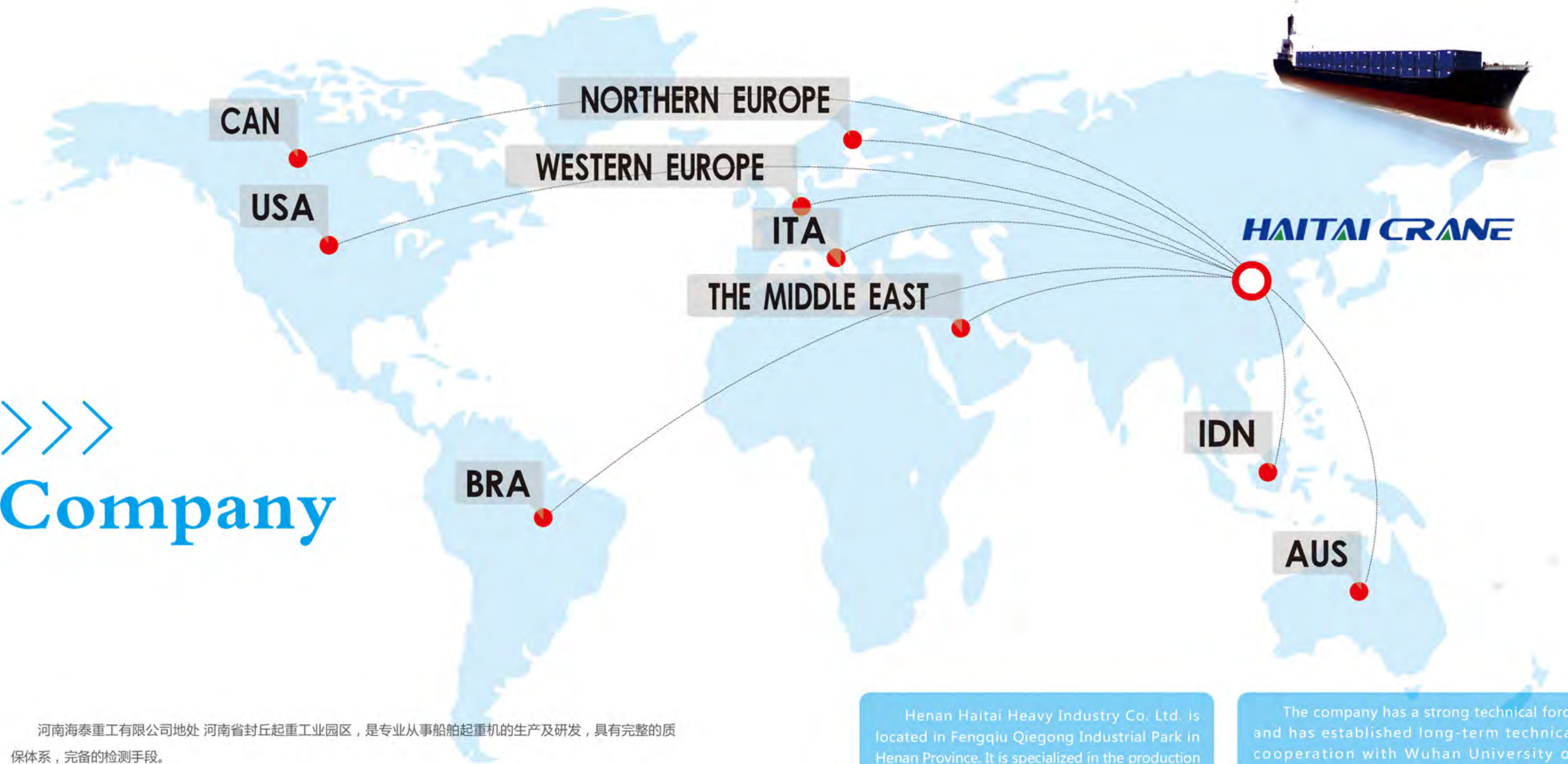


>>> Company



河南海泰重工有限公司地处河南省封丘起重工业园区，是专业从事船舶起重机的生产及研发，具有完整的质保体系，完备的检测手段。

公司主要生产船用电动回转起重机、船用电动吊、船用折臂伸缩吊、门座起重机、游艇搬运吊、集装吊、船用液压输油管起重机、船用门式起重机、船用克令吊、船用多用途起重机、船用悬臂吊、船用平移吊、船用杂物吊、船用电动单、双梁机舱行车等，均取得船级社颁发的 CCS/ABS/GL/DNV/LR/HINA/VERITAS 船检证书。

公司技术力量雄厚，与武汉理工大学港机专业，上海船舶研究设计院建立长期技术合作，拥有中高级工程技术人员 20 余人，担负产品的设计，开发并在制造检验过程中发挥主要作用，产品配套于海军舰船，工程船，海上平台，散货船，化学品船，油轮，船坞上进行配套。

我司拥有各类加工设备 200 余套，能独立完成车，铣，刨，磨，拉，镗，滚，钻，冲压，切割，折弯，卷板，铆焊，化验及热处理等全部工艺流程。

公司全体员工热忱欢迎国内外光临指导、洽谈业务、合作生产，并保证向用户提供优质一流的船舶甲板机械产品。

Henan Haitai Heavy Industry Co. Ltd. is located in Fengqiu Qieqong Industrial Park in Henan Province. It is specialized in the production and research and development of ship cranes, has a complete quality assurance system, and complete detection methods.

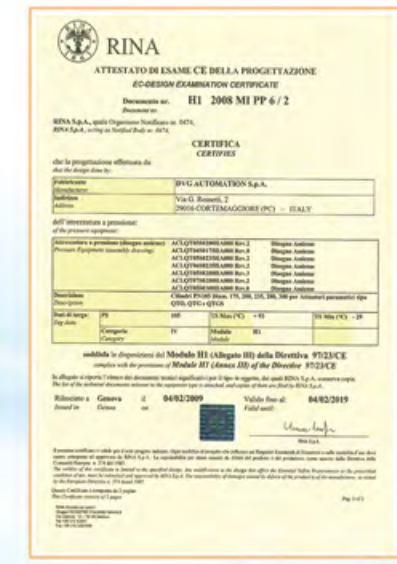
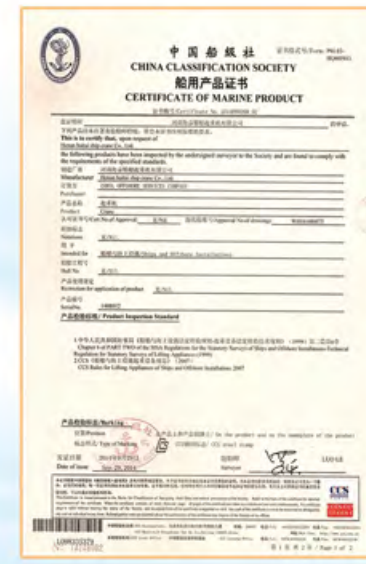
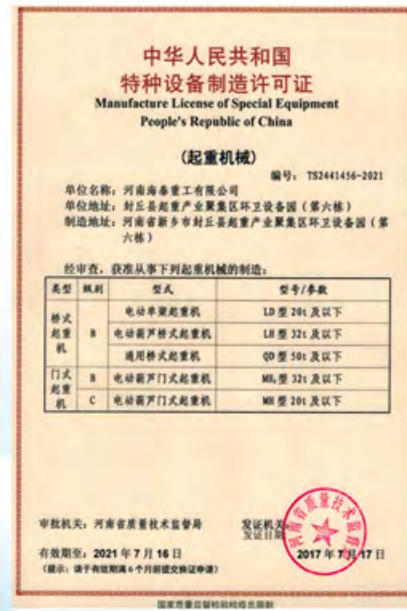
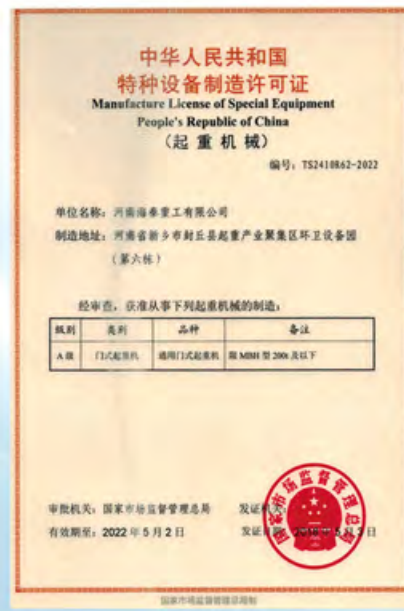
The company mainly produces marine electric rotary Crane, ship electric crane Crane, ship crane Crane, boat Crane, boat hoist, assembly Crane, ship hydraulic pipeline Crane, ship Crane, ship Crane, ship Crane, and ship crane. Multi-purpose Crane, ship cantilever crane, marine flat lifting, marine miscellaneous lifting, marine electric single, double-beam cabin driving, etc., all obtained CCS/ABS / GL/DNV/LR / HINA / VERITAS ship inspection certificate issued by the classification agency.

The company has a strong technical force and has established long-term technical cooperation with Wuhan University of Technology's Hong Kong Aircraft Professional and Shanghai Ship Research and Design Institute. It has more than 20 middle and senior engineering and technical personnel and is responsible for product design, development, and plays a major role in the manufacturing inspection process. Yuhaijun ships, engineering ships, Marine platforms, bulk carriers, chemical ships, oil tankers, docks, etc.

Division I have more than 200 sets of various processing equipment, can independently complete the car, milling, planing, grinding, pulling, boring, rolling, drilling, stamping, cutting, bending, winding, riveting, testing and heat treatment and all other processes.

Enterprise aptitude

企业资质



Type Test Certificate
型式试验合格证



Certificate of Patent
专利证书



G TO HANG

克令吊

克令吊现场试验
Field Test for Crane



D OUBLE HYDRAULIC SLEWING CRANE HOOK

双吊钩液压回转起重机



此吊机适用于港口，码头，船舶，石油平台，主钩100t，适合起吊较大吨位的货物，副钩5t，起升速度快，适合起吊较小吨位的货物，以满足不同的需求。

This crane is suitable for ports, wharf, ships, oil platforms, the main hook 100t, suitable for lifting large tonnage cargo, vice hook 5t, high lifting speed, suitable for lifting small tonnage of goods to meet different needs.

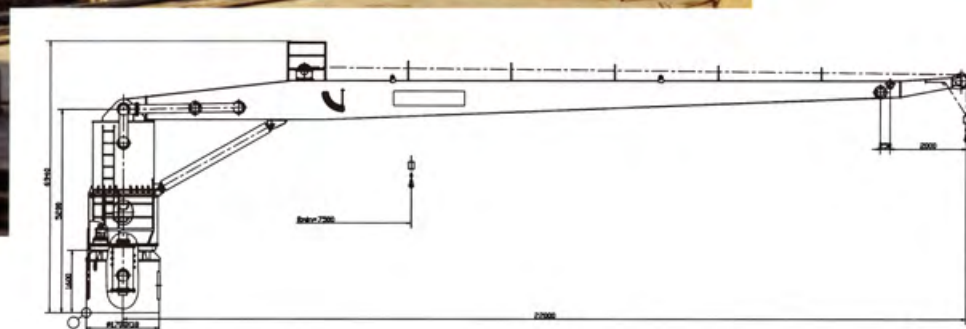


C RANE HYDRAULIC PIPELINE

液压输油管起重机

This crane is mounted on a tanker, mainly for ships transporting oil as well as lifting of goods and other items, it is a common, ideal lifting equipment on the tanker.

此吊机安装在油轮上，主要用于船舶输送油品以及起吊货物和其他物品，是油轮上常用较理想的起重设备。



MARINE HYBRID HYDRAULIC SLEWING CRANE

船用双动力液压回转起重机

公司新研发一款新型电，柴双动力双配套液压回转起重机，配有柴油机，可在无电源情况下用柴油机驱动油泵进行起吊作业。且运行平稳，无抖动，电动机柴油机可以任意操作，互换方便。还配有液压油冷却器，可在高温环境下操作运行，是船舶较理想的起重设备，尤其用于散货轮，可以频繁起吊货物，另外还配有司机室和照明投光灯，电动机和柴油机都可以在司机室完成起吊作业，司机视野良好，可以看到下面任何部位。也可以在雨中作业，也可以在夜间作业。

Our company's newly developed electric and diesel hybrid double supporting hydraulic isolated pillar crane, equipped with diesel engines, can do lifting operations through oil pumps driven by diesel engine under the conditions of no power. Its running is smooth and shakeless and it can be operated either via diesel engine or via motor and it's easy to exchange. It is also equipped with hydraulic oil cooler, which can be operated under a high temperature environment. It is an ideal hoisting equipment for ships especially for bulk carriers and it can lift cargo frequently. Moreover, it comes with cab and lighting spot lights so that the lifting operations either by motor or diesel engines can be done in the cab cause the driver can see any parts below with a good vision. It also can work in the rain and even at night.



H YDRAULIC TELESCOPE CRANE

液压伸缩吊



该类吊机适用于布置空间狭小的船舶，尤其是海工领域和小型船舶，吊机起升，回转，变幅伸缩均为液压驱动，其运行动作灵活，安全，可靠，调节范围大。

This type of crane is fit to be installed on the ship with the narrow arrangement, particularly marine engineering/service ship and small cargo ships. The crane's lifting, slewing, luffing are driven by hydraulic power. Its operation is flexible, safe, reliable and has a wide adjustment range.

额定载荷：1-25吨，臂长：10-25米
SWL:1-25ton, Length of jib:10-25m

H YDRAULIC TELESCOPE KNUCKLE CRANE

折臂伸缩吊



该类吊机适用于布置空间狭小的船舶，尤其是海工领域和小型船舶，吊机起升，回转，变幅折臂，伸缩均为液压驱动，其运行动作灵活，安全，可靠，调节范围大。

This type of crane is fit to be installed on the ship with the narrow arrangement, particularly marine engineering/service ship and small cargo ships. The crane's lifting, slewing, luffing, knuckle, telescoping are driven by hydraulic power. Its operation is flexible, safe, reliable and has a wide adjustment range.



最大额定载荷：15吨.米
Max. SWL: 150T.M



H YDRAULIC LIFTING

液压吊

该类吊机适用于布置空间狭小的船舶，尤其是海工领域和小型船舶，吊机起升，回转，变幅均为液压驱动，其运行动作灵活，安全，可靠，调节范围大。

This type of Crane is suitable for ships with narrow layout space, especially in the marine industry and small ships. The crane lifts, rotates, and changes are all hydraulically driven. Its operation is flexible, safe, reliable, and has a large range of adjustment.

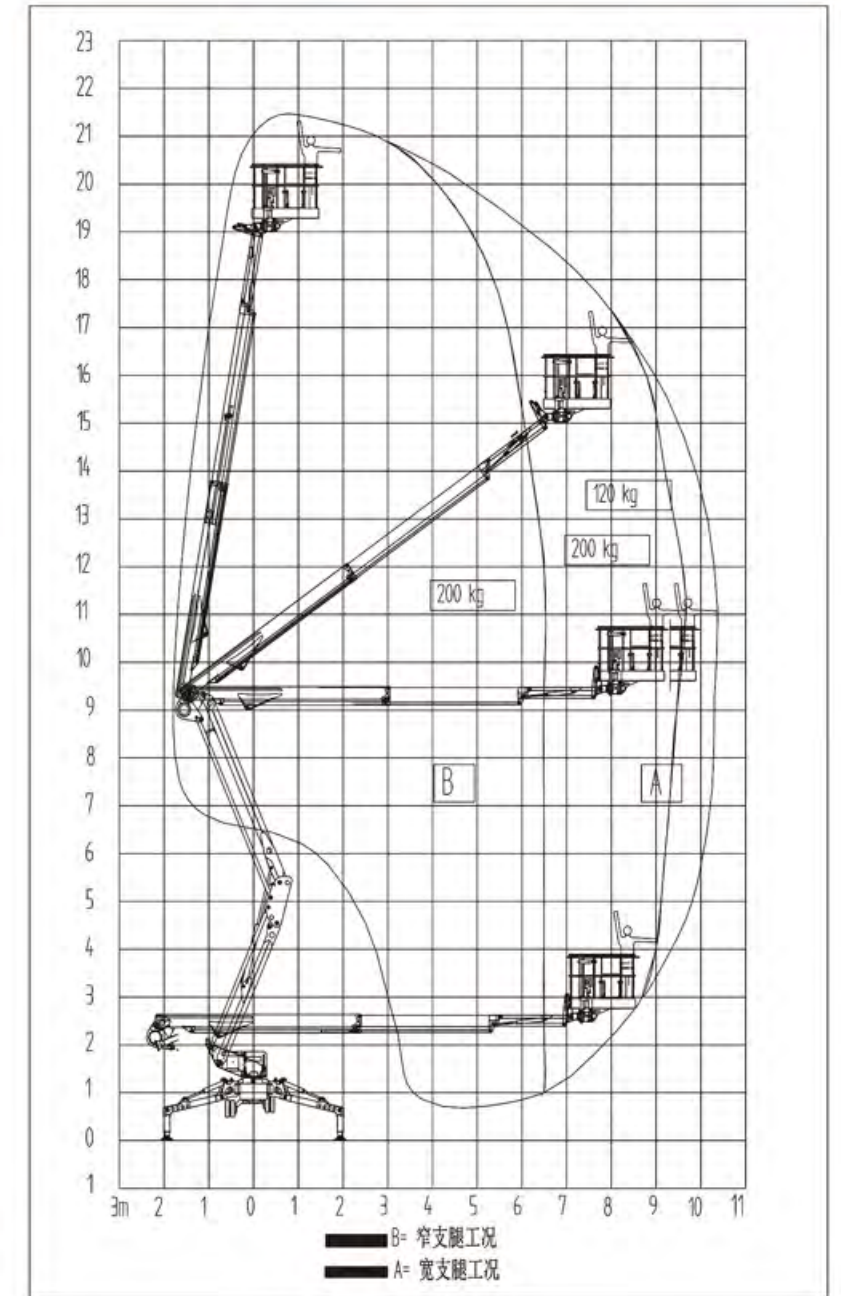
额定载荷：1-25吨，臂长：10-25米
SWL:1-25ton, Length of jib:10-25m



S SPIDER HIGH ALTITUDE OPERATING PLATFORM

蜘蛛式高空作业平台

蜘蛛式高空作业平台，移动方便，折臂结构紧凑，采用新型优质型钢，强度高、重量轻、直接接入交流电或采用本身直流电源启动，架设速度快，工作台即可升高又可水平延伸，还可旋转，易于跨越障碍物到达工作位置，是理想的高空作业设备。向上跨越和向外延伸的工作范围，并拥有方便的拖运能力。提供业内更好的操作性能，可灵活地到达各种位置的施工点。具有重量轻、多功能操作的特点，是运用于拥挤施工地的理想机型，为承包商、维修工和喷漆工所青睐。



Spider type high altitude operating platform, easy to move, compact folding arm structure, adopts a new type of high-quality steel, high strength, light weight, direct access to AC or use its own DC power source to start, set up a fast speed, the table can be raised and horizontal extension, but also can rotate, Easy to cross obstacles to work position, is an ideal high altitude operating equipment. Up and out of the scope of work and has a convenient towing capacity. Provide better operating performance in the industry, and can flexibly reach various locations of construction points. With the characteristics of light weight and multifunctional operation, it is an ideal model for crowded construction sites and is favored by contractors, maintenance workers and painters.

海泰重工蜘蛛式高空作业平台发动机参数

名称	单位	参数
最大作业高度	m	21.3
工作斗离地最大高度	m	19.3
作业半径	m	10
回转角度	°	365
工作斗尺寸	m	1.5×0.7
工作斗回转角度	°	90+90
工作斗载荷(2人)	Kg	200
整车长度	m	5.97
整车宽度	m	0.98
整车高度	m	2.06
宽型支腿跨距	m	3.87×3.94
窄型支腿跨距	m	2.57×5.05
最大爬坡度	%	29
最大行走速度	Km/h	1.5
整机重量	Kg	3200
履带对地压强	KN/m ²	2.94
支脚盘最大压力	KN	23
KDW702	hp/rmp	18.8/3600
电动机 220Vac	hp/KW	3/2.2

F Q FLOATING CRANE

FQ浮式起重机

FQ浮式起重机安装在围船上，主要用于件杂货的装卸作业。执行的规范为CCS《船舶与海上设施起重设备规范》（2007）及2010修改通报。本机为单臂架平衡滑轮组补偿齿条变幅的浮式起重机。其主要由起升机构、变幅机构、回转机构、臂架系统、立柱、转台、机器房、司机室、支承圆筒、梯子栏杆系统、电气控制系统和其它辅助装置所组成。本机可采用吊钩作业或抓斗作业，可车载作水平位移变幅和360°角度回转，起升、变幅、回转机构可联合动作，起升、变幅、旋转均采用交流变频调速，各机构均设置必要的限位开关和联锁保护装置。



The FQ floating crane is installed on the ship and is mainly used for loading and unloading of groceries. The implemented specifications are the CCS "Code for Lifting Equipment for Ships and Maritime Facilities"(2007) and the 2010 Revision Circular.

This machine is a floating crane with a single arm frame balance pulley set to compensate for the variable width of the rack. It is mainly composed of lifting mechanism, swaying mechanism, rotating mechanism, arm frame system, column, Turntable, machine room, driver's cab, supporting cylinder, ladder railings system, electrical control system and other auxiliary devices. This machine can use hook operation or grab operation, can carry as horizontal displacement variation and 360° angle rotation, rise, change, rotation mechanism can be combined action, rise, change, rotation are using AC frequency conversion speed adjustment, Each institution is equipped with the necessary limit switch and interlock protection device.



P ORTAL CRANE 门座起重机

门座起重机，适用于岸线较长的码头，如船厂的船台、舾装码头和万吨级泊位散杂货码头等。一般采用单臂架钢丝绳变幅、单臂架齿条变幅或四连杆臂架齿条变幅结构形式，配用吊钩或抓斗装卸货物。该类产品具有工作幅度大、起升高度高、速度快、运转平稳可靠、作业效率高等特点。

Introduction:

The boom is made up with single boom or four linked bars. The whole machine is light, with low wheel pressure. Its luffing system adopts steel wire luffing. It can luff with load, and move horizontally. This model has four working mechanisms, which are lifting, slewing, luffing and traveling. It can work both independently and collaboratively. The linkage among all mechanisms greatly improves the equipment's productivity. It moves stably, is save and reliable, the ideal equipment for shipbuilding factory assembly. The company uses its rich experience, exquisite techniques and reliable technologies during designing, manufacturing and installation, assuring the product will be able to run safely, reliably and smoothly under all normal working conditions.

Application:

The crane is installed on the bank. It is applied to the port of loading and unloading cargo between the bank and the ship. The customer can choose from the two: with hook \ with hook and grab.

- Common bulk: coal, coke, gravel, sand, ore, cement clinker, steel slag, sulfur, grain, etc.
- Common cargo: steel, wood, packed cargo, big stone, etc.

ENGINE ROOM CRANE

机舱行车吊

该类吊机为双轨（包含单梁型、双梁型）机舱行车吊，适用于船上机舱内伙食、备件及杂物的吊运，额定载荷2-30吨，轨距及悬臂长度可根据船舱实际尺寸而定。控制方式有手动和电动两种。

These cranes are double-rail(including single-girder type and double-girder type)travelling cranes in the engine rooms.The are fit for hanging the provision,spare parts and rummages in the engine engine room on board.SWL of these cranes we can provide are fro,2-30ton.The rail span and length can be fixed according to the cabin.They can be controlled by manual and electrical.



This dual-beam monorail crane with dual dual-beam cabin and flight traffic lane within the cabin equipment for the ship maintenance and repair.By the longitudinal beams and lateral movement moveing beam,HM-C-type two-speed electric hoist,vertical and horixontal movement of the brive components.Crane lifting and walking motor uses conical rotor motor,l-beams installed below the rack,ensure the motor locking brake in time when the whole body,not to slip.Lifting motor with two-speed function,there is often a slow speed and positioning capabilities,to meet your needs.Beam power on both sides of both mobile devices limit to ensure the safe operation of equipment.

技术参数 Technical parameters

型号 Type	额定载荷 Rated load SWL (t)	跨距 Span (m)	起升高度 Lifting height (m)	起升速度 Lifting speed (m/min)	行走速度 Walking speed (m/min)	设计条件 (纵倾、横倾) Design Article(trim, heel) (°)
DSH	0.5	2.5~5	6~12	8 / 0.8	6.0	2° /5°
	1	3~6	6~12	8 / 0.8	6.0	2° /5°
	2	3~6	6~18	8 / 0.8	6.0	2° /5°
	3	3~6	6~18	8 / 0.8	6.0	2° /5°
	5	3~8	6~18	8 / 0.8	6.0	2° /5°
	10	3.5~10	9~18	8 / 0.8	6.0	2° /5°

MARINE ELECTRIC DOUBLE-TRACK ENGINE ROOM CRANE

船用电动双轨机舱行车



本吊机有单轨双轨双梁机舱行车和双轨双梁机舱行车，用于船舶机舱内设备的维护和维修。由纵向移动梁和横向移动梁、HM-C型双速电动葫芦、纵向和横向移动的驱动装置组成。吊机的起升和行走电机采用锥形转子电动机，工字梁下方安装有齿条，保证电机自锁时整体机构能及时制动，不产生滑移现象。起升电机具有双速功能，有常速和慢速定位功能，满足您的不同需求。移动梁两侧均有限位装置，保证设备安全运行。



MARINE DOOR HATCH COVER CRANE 船用门式舱盖吊

本起重机安装在船舶甲板上，轨道铺设在船舶甲板两侧，吊机沿轨道运行，作业面覆盖整个船舶甲板上。其设备专门用于起吊舱盖，也可吊运其他物品。主梁两端安装有两套卷扬系统，同时可操作四个吊钩，此吊钩具有同升同降功能，以满足起吊舱盖平稳起升和降落。主梁下端安装有一台电动葫芦，也可吊运其他物品，以满足不同需求。



The crane is mounted on the deck of the ship, the rail is laying on both sides of the ship deck for crane running & working on the entire deck of the ship. The crane designed for lifting the cover or hoisting other items. There are two sets of winch system installed at both ends of the main beam, which can operate four hooks up or down at the same time to lift or land hatch cover smoothly. There is an electric hoist installed below the main beam for lifting other items to meet different requirements.



THE YACHT HANGING 游艇吊

游艇搬运机可以根据客户的要求进行设计制造，其主要用于游艇的上下水、吊运等工况，可以方便、快捷地满足不同船艇的吊运保养、维修或厂区间的移运工作，安全可靠性能很强。上部结构为双门架“U”型连接框架，以便于在码头或厂区满足不同船型的顺利进水、出水、吊运等工作。

主要性能参数： Main Parameters:

Rated capacity (t) 额定载重量	100	150	200	300	
Grounding specific pressure (kg/m²) 接地比压	11.5	11	11.5	6.5	
Grade ability (m/min) 爬坡能力	2%	4%	4%	4%	
Lifting speed (m/min) 起升速度	Full load 满载	0-2	0-1	0-2	0-1
	Non-load 空载	0-5	0-4	0-3	0-3
Traveling speed (m/min) 运行速度	Full load 满载	0-20	0-20	0-20	0-20
	Non-load 空载	0-35	0-35	0-35	0-35
Working ambient temperature 工作环境	-20° ~+50°	-20° ~+50°	-20° ~+50°	-20° ~+50°	

Product introduction:

Boat lift is non-standard customized equipment with self-power, multi-point lifting, full hydraulic transmission, the upper structure is double door frame "U" type connection framework to meet the different ship types (such as sailing) lifting operation demand. It is mainly used for boat's water launching, plant lifting, and it can conveniently and quickly lift, maintain and repair of the different boat or the transport work in the plant with very strong safety and reliability.



In the application of small tonnage watercraft transportation machine, according to customer requirements and the environment, it can be designed as economic type full electric drive mode.



RUBBER TYRED GIRDER CRANE

轮胎式提梁机

350T-1200T轮胎式提梁机主要由大车行走系统、支腿、主梁、起重行车、电气及液压等系统组成。TTB250轮胎式提梁机适用于中国时速350km/h、250km/h公路客运专线，从预制场台座内的起吊、场内短距离运输（横向、纵向），能在预制场装车区将混凝土箱梁吊装到运梁车上等工作。具有施工速效快、机动灵活，可以在任意台座处取梁、移梁、落梁，不需要辅助机械和过多人工等优点。



Rubber Tyred Girder Crane

.Steering:can make straight movement,transversal movement,and steering at 90°;
Pivot slewing:the machine can do pivot slewing at 360°centered on machine.

Rubber Tyred Girder Crane

- .Capacity 350tons~1200tons
- .Full frequency conversion
- .Hydraulic steering system
- .90°steering,360°pivot slewing
- .Intelligent safety system
- .Canin&wireless control
- .Option:special spreader full hydraulic system
- .Usage for large bridge girder transfer



RUBBER TYRE CONTAINER GANTRY CRANE

轮胎式集装箱门式起重机

轮胎式集装箱门式起重机（英文缩写RTG），主要由钢结构、起长虹机构、微转机构、吊具防摇装置、大车运行机构、转向机构、小车运行机构、集装箱吊具、柴油发电机组、电气设备及其它必要的安全和辅助设备组成。可采用变频、PLC控制系统和CMMS故障监测系统。

引用的主要标准：GB/T15362-92《轮胎式集装箱门式起重机技术条件》，GB/T4783-94《轮胎式集装箱门式起重机试验方法》以及国际标准化组织ISO标准，欧洲FEM，日本JIS标准。

Rubber tyre quayside container ganty crane (RTG) generally includes the following units: steel frame, hoisting mechanism , minimum slewing mechanism , and spreader anti-shaking mechanism , crane lravei mechanism, turning mechanism . trolley traverse mechanism . container spreader , diesel generating sets , electrical equipment and other accessory equipments for safety . Inverter . PLC and CMMS (fault monitor system) are adopted by us .

Referenced standards : GB / T15362-92 rubber tyre container gantry crane technical specification GB / T4783-94 rubber tyre container gantry crane test method . ISO standards , FEM standards and JIS standards .



MODORAIL PROVISION CRANE

平移吊

该类吊机为平移吊，可用于船靠港时，从岸上往船上进行吊运，额定载荷2-20吨，悬臂长度可根据船舱或上层建筑实际尺寸而定



This type of Crane is a flat lift and can be used for lifting from the shore to the ship when the ship is in port. The rated load is 2-20 tons. The cantilever length can be determined according to the actual size of the cabin or superstructure.

RAIL MOUNTED CONTAINER GANTRY CRANE 轨道式集装箱门式起重机

轨道式集装箱门式起重机（英文缩写RMG），主要由钢结构、起升机构、微转机构、吊具防摇装置、大车运行机构、小车运行机构、集装箱吊具、电气设备及其它必要的安全和辅助设备组成。可采用变频、PLC控制系统和CMMS故障监测系统。

引用的主要标准：GB/T19683-2005《轨道式集装箱门式起重机》，JT/T566-2004《轨道式集装箱门式起重机安全规程》，以及国际标准化组织ISO标准，欧洲FEM，日本JIS标准。

Rail mounted container gantry crane (RMG) generally includes the following Units: steel frame, hoisting mechanism, minimum slewing mechanism, spreader anti-shaking mechanism, crane travel mechanism, trolley traverse mechanism, container spreader, electrical equipments and other accessory equipments for safety. Inverter, PLC and CMMS (fault monitor system) are adopted by us.

Referenced standards: GB/T19683-2005 rail mounted container gantry crane. JT/T566-2004 rail mounted container gantry crane safety rules. ISO standards. FEM standards and JIS standards.

T IRE CRANE 轮胎式起重机



港口轮胎起重机在港口起重机数量最多，主要用于件杂装卸，也用于散货装卸和工程安装作业，广泛地使用在港口、铁路、货场和工地。但是，目前国内外的港口轮胎起重机绝大多数是采用柴油机驱动方式工作，能耗大、污染严重。



双驱动港口轮胎起重机为柴油机发电和交流电双驱动方式的全回转臂自行式港口轮胎起重机，该机既可以外接交流电源，实现“公共电网+机械传动”的驱动方式，又可以利用自带的柴油机实现“柴油机+交流发电机+机械传动”的驱动方式，在有外接公共电网的地方，比用柴油机驱动的方式避免了燃烧柴油造成的对环境的污染，节约运行时的能源成本，并可在无电或停电的时候工作，可广泛应用于港口、车站、货场、工矿企业、建筑工地等场所的件杂货的装卸与吊装作业。

Port Tyre cranes have the largest number of cranes in the port and are mainly used for miscellaneous loading and unloading. They are also used for bulk loading and unloading and engineering installation operations. They are widely used in ports, railways, freight yards and construction sites. However, at present, the vast majority of domestic and foreign port tire cranes are operated by diesel engine driving mode, which has high energy consumption and serious pollution.

The dual-drive port tire crane is a full-turn rotating arm self-propelled port tire crane for diesel engine power generation and AC electric dual drive. The aircraft can not only be connected with AC power supply, but also achieve the "public power grid + mechanical transmission" driving method. It is also possible to use the self-propelled diesel engine to achieve the driving method of "diesel engine + AC engine + mechanical transmission". Where there is an external public power grid, diesel diesel engine is used to avoid the pollution of the environment caused by the combustion of diesel fuel. Saves the energy cost at the time of operation, and can work when there is no electricity or power outage. It can be widely used in the loading, unloading and lifting of groceries at ports, stations, freight yards, industrial and mining enterprises, construction sites, and other places.

OFFSHORE CRANE
海洋平台起重机



海洋平台起重机主要是在海洋平台上使用的起重机，是一种海洋平台装卸货物和吊运人员到平台上面的设备，是海洋石油生产中最重要的生产和安全设备之一，其安全性、可靠性、可维修性、可抗风性及耐腐蚀性要求很高。它具有起重能力大，操纵方便，耐冲击，制动性能好，安全可靠，装卸货效率高与对货物的适应性好等特点它和陆用起重机的执行标准不同，由于海面环境恶劣所以海洋平台起重机采用的安全系数一般在10倍，而陆用起重机一般采用的安全系数为2-3倍。



Offshore platform crane is mainly used on offshore platform crane, is a kind of offshore cargo handling and lifting personnel to the above equipment platform, is the most important in the production of offshore oil production and safety equipment, one of its safety and reliability, maintainability, and high requirement of wind resistance and corrosion resistance. It has large lifting capacity, convenient manipulation, impact resistance, good braking performance, safe and reliable, loading and unloading of goods of high efficiency and good adaptability to the goods it's different from the implementation of land use crane standard, due to the surface of the environments, so the safety factor of the offshore platform crane used generally in 10 times, and the safety factor of the commonly used stationary crane for 2-3 times.



S HIPBUILDING GANTRY CRANE 造船门式起重机

造船门式起重机其结构形式分为单梁和双梁，主要由门架、上小车、下小车、大车运行、维修起重机、电梯及电气设备组成，并设有夹轨装置、锚定装置、防风、防雷以及其他安全和辅助设施。跨度较大时设有大车纠偏系统。

引用标准：GB/T8504-95《修造船厂门式起重机技术规范》，GB/T14406-93《通用门式起重机》。GB6067-85《起重机安全规程》，GB3811-2008《起重机设计规范》。

The structure of ship building gantry crane has single girder type and double girder type. Ship building gantry crane steel structure is composed of gantry frame, up trolley, lower trolley, gantry travel mechanism, maintenance crane, elevator and electrical devices. Accessory Safety related devices such as rail clamp, anchor, wind proof and lightning proof are provided, And traveling deviation correcting system is provided for longer span crane. Referenced criterion and standards are as follows: GB/T8504-95 repair & building shipyard gantry crane technical criterion, GB/T14406-93 general gantry crane. GB6067 lifting equipments safety regulation, GB3811-2008 crane design criterion.



IFT PLATFORM 升降平台





European style hoist



Electric wire rope hoist



Electric chain hoist



Electric winch



Remote controller



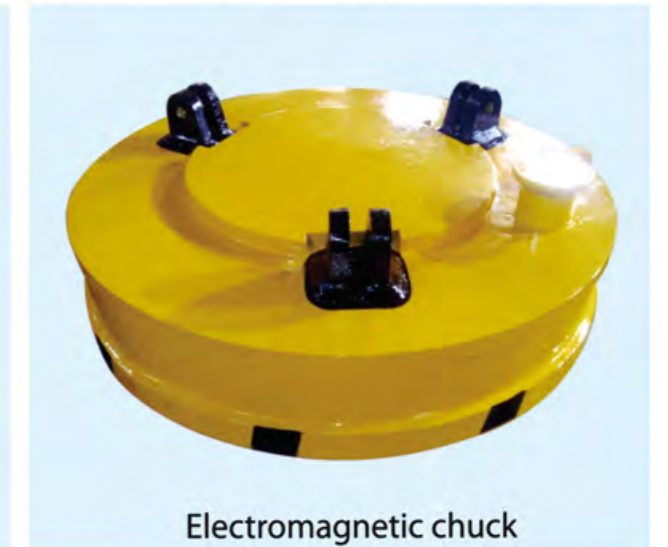
Crane hook



Cable drum



Grab bucket



Electromagnetic chuck



Rail track



Cable reel